



## Your 2027 Ryder Cup Sanctuary

Lisnabrin House and the entire 300-year-old estate is reserved exclusively for you and your guests. Discover the art of effortless luxury with a dedicated team at your service, including a private chef, chauffeured transport, a professional housekeeper, and a personal steward available at any hour. Every detail, from daily routines, personalised experiences or curated local adventures are crafted to create a stay that is uniquely yours.

Enjoy Effortless  
All-Inclusive Luxury

# TABLE OF CONTENTS



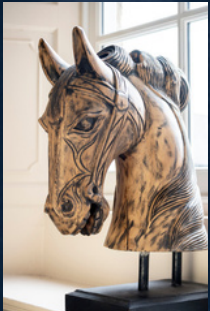
- 03. An Introduction to Lisnabrin
- 04. Your Inclusive Stay
- 05. A Little About The House
- 06. Enjoy Curated Day Trips
- 07. Out & About
- 08. Golf
- 09. Contact Us

# LISNABRIN COUNTRY HOUSE

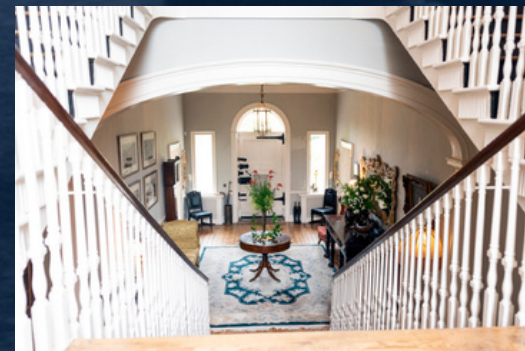
The house is at it's best full of family and friends, with something for everyone and lots of things to add in to make for a memorable stay.

Lisnabrin is set in the beautiful Bride Valley in East Cork, there are a wealth of activities and sightseeing locally.

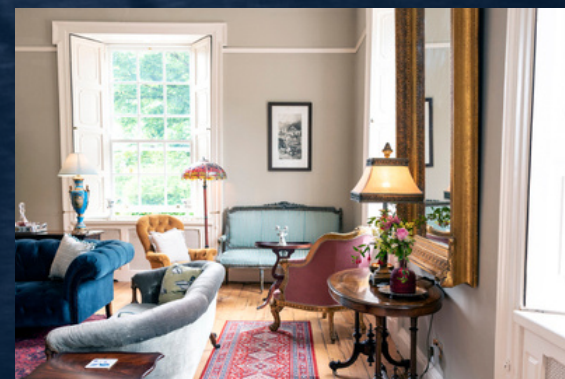
A beautiful Georgian property, built in 1720 and renovated to a high standard. The Lisnabrin ethos is cosy country comfort combined with all the modern conveniences. From luxurious beds and linens, antique furniture and roaring log fires to fibre broadband, your own bar, fun entertainment area and large hot tub with countryside views. Lisnabrin is the perfect venue for memorable gatherings with family and friends.



- Rooms full of character with open fires & comfy sofas
- Hot-Tub overlooking the horse paddocks & the Bride Valley
- Your own Bar - Guinness, Lager & Cider Taps
- Games Wing with Pool Table & Darts Board
- BBQ Terrace - Gas & Coal BBQ's
- Sun Terrace with Comfy Sofas and Parasols
- Football and Croquet on the Lawn
- Woodland Firepit for a night under the Irish stars
- Take a trip on the Estate Push Bikes
- Fun nights in with Local Musicians, Storytellers or perhaps explore local traditions with a Curated Whiskey Tasting.



[LEARN MORE](#)





# Your Inclusive Stay

- Fully Staffed: House Steward, Housekeeping & Service Staff.
- Bar Stocked Kegs of your choice, tapped and ready to pour. Select Wines & Spirits.
- Buffet Breakfast each morning.
- Grazing Table throughout the day - kept stocked with your favourite treats.
- Formal Dining each evening - Private Chef & Full Service Team.
- Chauffeur Transport to suit your groups requirements.
- Daily Curated Adventures and Cultural Experiences.
- Evening Entertainment: Trad Band, Story Teller, Whiskey Tasting.

Items arranged as required - Additional cost:

- Helicopter Transport to/from Adare Manor
- Golf Outings - Play some of the best courses Ireland has to offer.



## A LITTLE ABOUT THE HOUSE

Fall in love with the character of this 300-year-old Georgian Country House, offering six double ensuite bedrooms and a generous family room. From grand four-poster beds to bespoke decor, every room is uniquely furnished to ensure a super-comfy, one-of-a-kind stay.

Find your sanctuary in the main house, where the quiet Library, an elegant sixteen-seat formal Dining Room, and an antique-filled Drawing Room create a beautiful balance of comfort and tradition. Whenever you're ready to turn up the fun, step into the Coach House Wing. Built for socialising, this laid-back hub has everything you need: gather around the huge oak dining table, pull a pint at your private bar, catch a film on the supersized screen, or challenge your friends to pool and darts.

Open the doors to the sunny BBQ courtyard terrace, or cozy up inside by the wood-burning stove. After a long country stroll, there's nothing better than a soak in the large hot-tub overlooking the horse paddocks.



[LEARN MORE](#)

# ENJOY CURATED DAYS OUT



**CLIFFS OF MOHER**



**BLARNEY STONE**



**JAMESON DISTILLERY**



**RING OF KERRY**



**WATERFORD  
CRYSTAL**



**KILKENNY CITY**



# OUT & ABOUT

Our aim is to ensure Lisnabrin guests feel at home and can sit back and relax whilst enjoying everything that this amazing part of Ireland has to offer. This East Cork area is home to the dramatic Blackwater River and Bride Valley with the back drop of rolling hills and lush green fields. It boasts some of the most productive land in Ireland and as a result we are surrounded by dairy farms and racing yards. There are lots of things to do, we are only 25 minutes scenic drive to the sea or 25 minutes to the dramatic mountain viewing and hiking spot at the Vee.

[LEARN MORE](#)

## ACTIVITIES

### KAYAKING

#### 20 MINUTE DRIVE

[Blackwater Boating](#) can provide guided kayaking on our local waterways, a great way to see the area.

### CLAY SHOOTING

#### 10 MINUTE DRIVE

Try your hand at Clay Shooting, in the beautiful Bride Valley.

### FISHING

#### 10 MINUTE DRIVE

Joe Willoughby at [Lismore Fishery](#) is a fantastic guide on the famous Blackwater River, he has looked after many of our guests and they often come home with a great catch and always come home with great experiences.

### BLACKWATER BOAT TRIPS

#### 25 MINUTE DRIVE

Take a leisurely boat trip down the [Blackwater River with Tony Gallagher](#) - an experienced guide. Super way to see the area, many of the local historic houses have gardens sweeping down to the waters edge, some lovely views of beautiful buildings.

### KIDS DAY OUT

#### 15 MINUTE DRIVE

[Leahys Farm](#) is fantastic for children and adults of all ages. Farm Animals, Playgrounds, Quad Trailer Rides & much more.

### CORK CITY

#### 45 MINUTE DRIVE

Cork City is a great day trip. Blarney castle is such an interesting trip and of course you must kiss the renowned stone : [Blarney Castle & Stone](#), [The Butter Museum](#), [Cork City Gaol](#) & [The English Market](#)

### TITANIC EXPERIENCE COBH & SPIKE ISLAND

#### 40 MINUTE DRIVE

40 mins drive to the picture perfect coastal town of Cobh, the last port of call of the Titanic. Visit the [Titanic Museum](#) and couple it with a trip to [Spike Island](#). Dinner or lunch in one of the many spots along the seafront makes for a lovely day out.

### LISMORE

#### 10 MINUTE DRIVE

Just a short drive from Lisnabrin, [Historic Town of Lismore](#) Take a drive up to the [Vee](#), just outside Lismore - beautiful Corrie Lake & you can see 5 counties.

[Lismore Castle Gardens](#) are a wonderful way to spend an afternoon. Dinner or lunch in [The Farmgate Restaurant](#) or [Foleys Pub Restaurant](#).

### ARDMORE

#### 25 MINUTE DRIVE

Head to [Ardmore](#), our local Seaside Town - for the beach or the Spectacular [Spectacular Cliff Walk](#) - followed by lunch/dinner in the [The Whitehorses Restaurant](#) or treat yourselves to seaviews whilst [Bar Dining or the Michelin Restaurant experience at the renowned Cliff House Hotel](#).

### JAMESON WHISKEY DISTILLERY

#### 25 MINUTE DRIVE

[The Jameson Whiskey Distillery Tour](#) is fantastic and definitely try [Ferrit & Lee](#) or [JJ Coppingers Pub](#) for lunch.

### THE DUNGARVAN AND MIDLETON GREENWAYS

#### 30 MINUTE DRIVE

Amazing way to see the countryside - we are transforming some of our most scenic old train routes into [paved cycle routes](#). You can hire bikes lunch halfway and cycle back...lovely views.

## LOCAL RESTAURANTS

[The Farmgate](#) - Lismore (10 Minute drive)

[360 Cookhouse](#) - Dungarvan (30 Minute Drive)

[The Old Bank](#) - Dungarvan (30 Minute Drive)

[The Cliff House](#) - Ardmore (25 Minute Drive)

*Enjoy*



## GOLF

You are a scenic drive or a short helicopter transfer from some of the best courses Ireland has to offer.

The Old Head Golf Links (Kinsale, Co. Cork):

A breathtaking clifftop course offering spectacular Atlantic views.

Ballybunion Golf Club (Co. Kerry):

Consistently ranked among the premier links courses in the world.

Waterville Golf Links (Co. Kerry):

A magnificent, classic links experience on the Ring of Kerry.

Lahinch Golf Club (Co. Clare):

A historic, challenging links often referred to as the "St Andrews of Ireland."

The K Club (Co. Kildare):

A pristine parkland course and proud former host of the Ryder Cup.

Mount Juliet Estate (Co. Kilkenny): A beautiful Jack Nicklaus signature parkland course.

Druids Glen (Co. Wicklow): Known as the "Augusta of Europe" for its stunning flora and water hazards.

# LISNABRIN COUNTRY HOUSE

*Your 2027 Ryder Cup Sanctuary*



We would be delighted to help make your stay a special one. Please do not hesitate to get in touch to discuss your plans.

Lisnabrin House  
Curraglass, Co. Cork  
P51W9ER, Ireland

T +353 86 228 0312

M Stay@LisnabrinHouse.ie

W www.LisnabrinHouse.ie

